



Lake Cushman Evacuation Levels Guide

Div 2, 3 & 4

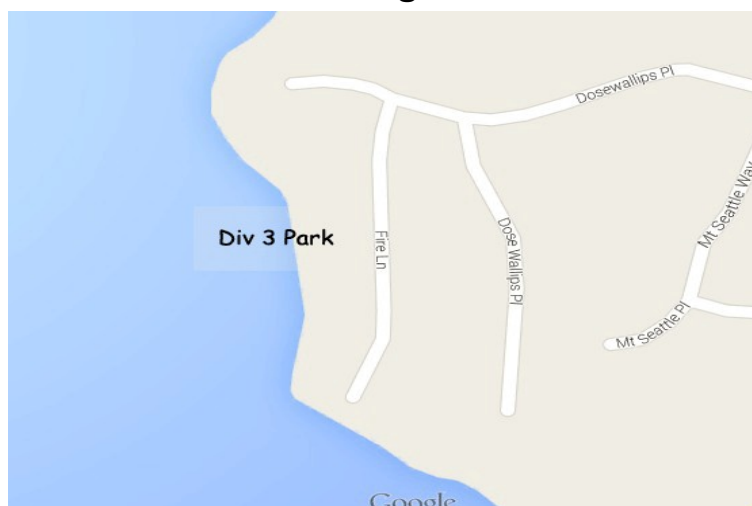
This document is intended to be a guide for Lake Cushman residents during an emergency situation. Evacuation Plans will generally use three activation levels. The Incident Commander has responsibility to activate and deactivate this plan through the Mason County Sheriffs' Office. In the event of an emergency, it is important you and your family know what the evacuation level terms mean, and know how to react.

Level 1 (Advisory) - Residents should be aware of the danger that exists in the area, monitor emergency services websites and local media outlets for information. This is the time for preparation and precautionary movement of persons with special needs, mobile property and (under certain circumstances) pets and livestock.

Level 2 (Watch) - This level indicates there is significant danger to your area. Fire & Law Enforcement personnel are working to determine when and if evacuations will be necessary. Be ready to leave at a moments notice.

Level 3 (Warning) - Residents are advised to evacuate immediately the risk of fire is imminent. Grave danger may face those who do not depart. This means leave immediately. Listen to local media, and watch for emergency personnel who may be coming by to give further instructions regarding the evacuation.

If directed to a congregation point please use the map shown below. Note: Div 2 park is shown on page 2 and could be used as well. Emergency Personnel will be directing.

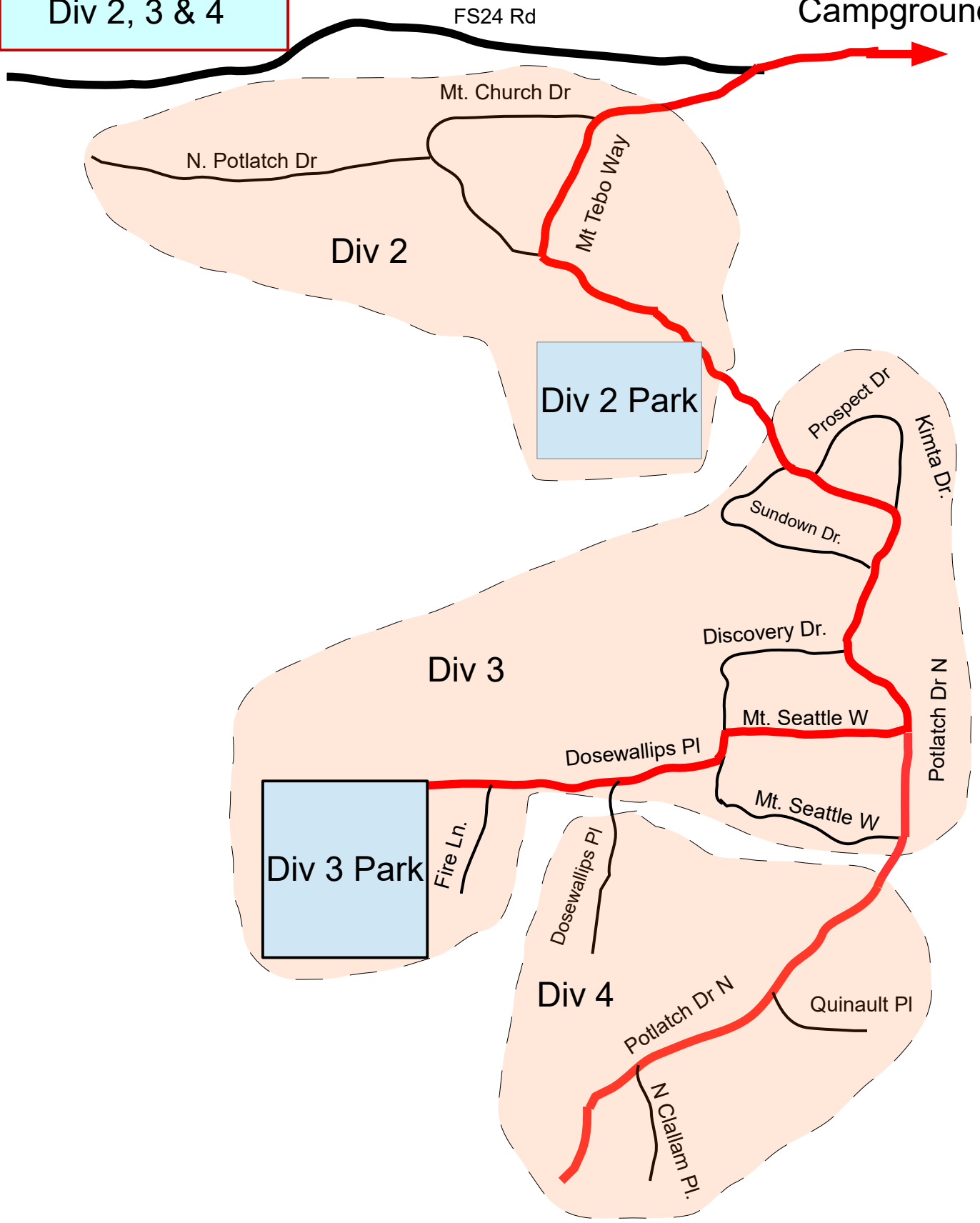


**Congregation
Area Div 3 Park**



Detail for
Div 2, 3 & 4

To Big Creek
Campground



Prepared by Lake Cushman
Firewise Council
Feb 2020



**Mileage from Div 3 Park*

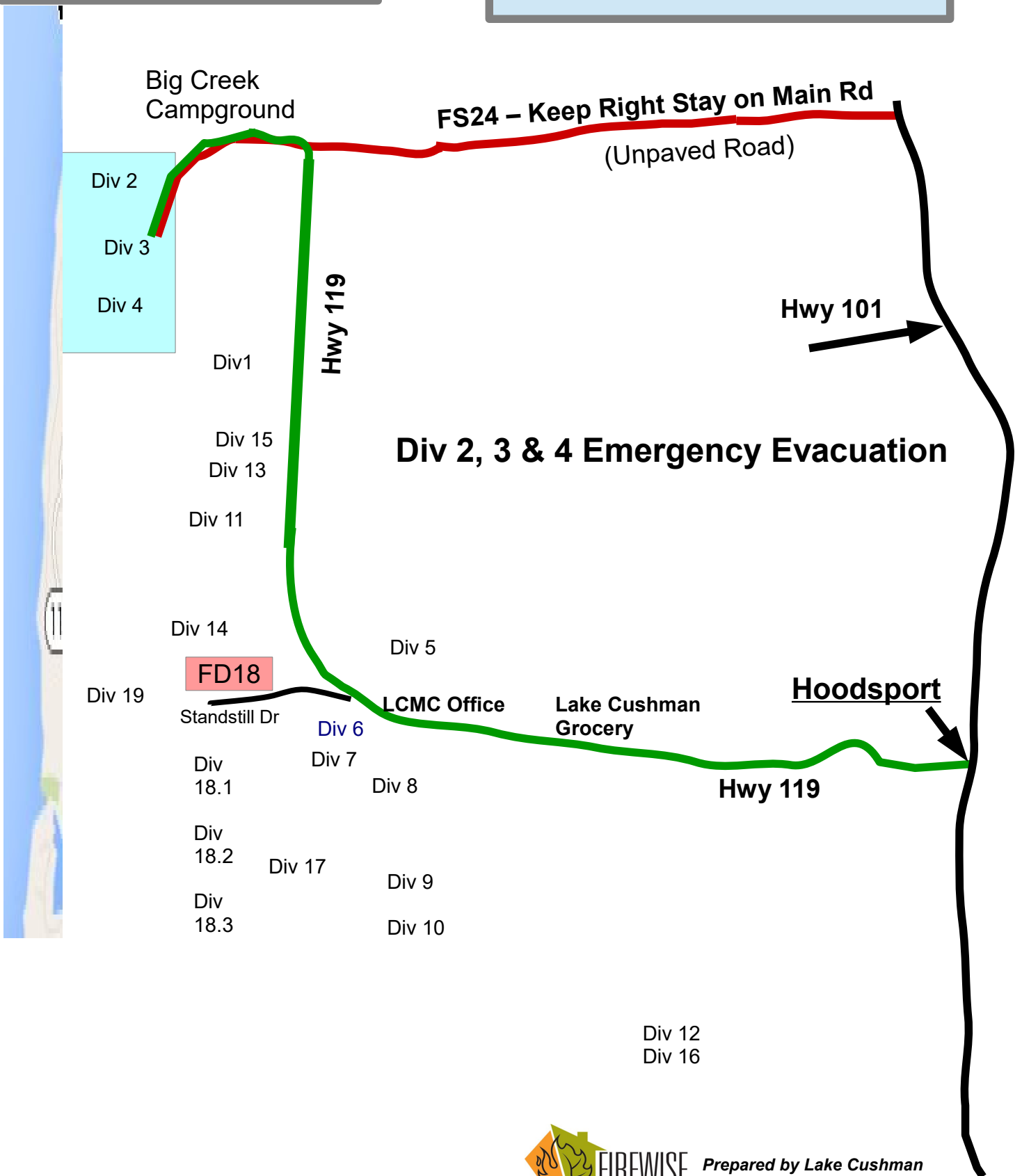
North Evac Route

- 1.4 mi to intersect. FS24
- 1.6 mi to "T" Hwy119 & FS24
- E 9.2 mi on FS24 to Hwy 101

**Mileage from Div 3 Park*

South Evac Route

- 1.4 mi to intersect. FS24
- 1.6 mi to "T" (Hwy119 & FS24)
- S 9.2 mi. on Hwy119 to Hwy 101



Div 2, 3 & 4 Emergency Evacuation



Prepared by Lake Cushman
Firewise Council
Feb 2020

